

2 FOUNDATION PLAN

3/8" = 1'-0"

FOUNDATION NOTES:

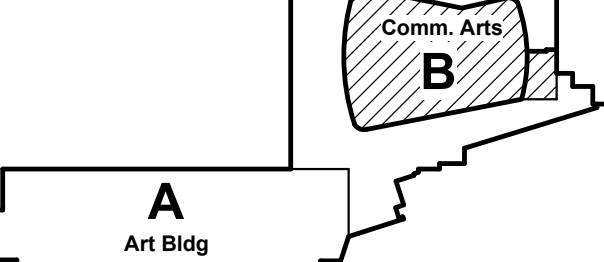
- CONTRACTOR TO DETERMINE FINISHED GRADE ELEVATION IN FIELD.
- TOP OF GRADE BEAM ELEVATION = -0'-2" FROM FINISHED GRADE
- TOP OF DRILLED PIER ELEVATION = -4'-2" MIN. FROM FINISHED GRADE
- FOUNDATIONS ARE DESIGNED TO BEAR ON 24" CAISSONS (40' MIN. LENGTH) WITH 185 KIPS MIN. ALLOWABLE TENSION / COMPRESSION CAPACITY. (REFER TO GOTECH REPORT)
- PROPOSED GRADE ELEVATIONS AROUND THE PERIMETER OF THE BUILDING TO BE MEASURED IN FIELD. REFER TO ARCH./CIVIL DRAWINGS.
- REFER TO ARCH. DRAWINGS FOR LOCATION OF EXISTING RAMP. EXIST. RAMP TO BE REPLACED AFTER FOUNDATION INSTALLATION.
- DESIGNATIONS:**
GB-1 4'-0" WIDE X 3'-6" MIN. DEPTH GRADE BEAM REIN. WITH (6) #7 EA. WAY TOP AND BOTTOM W/ (2) #4 TIES @ 12" O.C. MAINT. BOTT. OF GRADE BEAM 4'-2" MIN. FROM FINISHED GRADE (F_c = 4500 PSI)
HP-1 2'-0" DIAMETER CAISSON REINFORCED WITH HP12X53 PILE W/ (4) 3/4" HEADED STUDS AT 18" O.C.
- REFERENCE DRAWINGS:**
S.000 GENERAL STRUCTURAL NOTES
S.001 GENERAL STRUCTURAL NOTES
S.002 SPECIAL INSPECTION SCHEDULES
S.700B SECTIONS AND DETAILS
S.701B SECTIONS AND DETAILS
S.702B SECTIONS AND DETAILS



33533 W. TWELVE MILE
SUITE 200
FARMINGTON HILLS, MI 48331
P. 248.344.2800 F. 248.344.1650
PROJECT #2205017.00

MEG CORP. RESERVES PROPRIETARY RIGHTS, INCLUDING
COPYRIGHTS, TO THIS DRAWING AND THE DATA SHOWN
THEREON. SAID DRAWING AND/OR DATA ARE THE
EXCLUSIVE PROPERTY OF MEG CORP. AND SHALL NOT BE
USED OR REPRODUCED FOR ANY OTHER PROJECT WITHOUT
THE EXPRESS WRITTEN APPROVAL AND PARTICIPATION OF
MEG CORP. ©2023 MEG CORP.
State Registration Number
REF. SCALE IN INCHES PROJECT #2205017.00

KEY PLAN

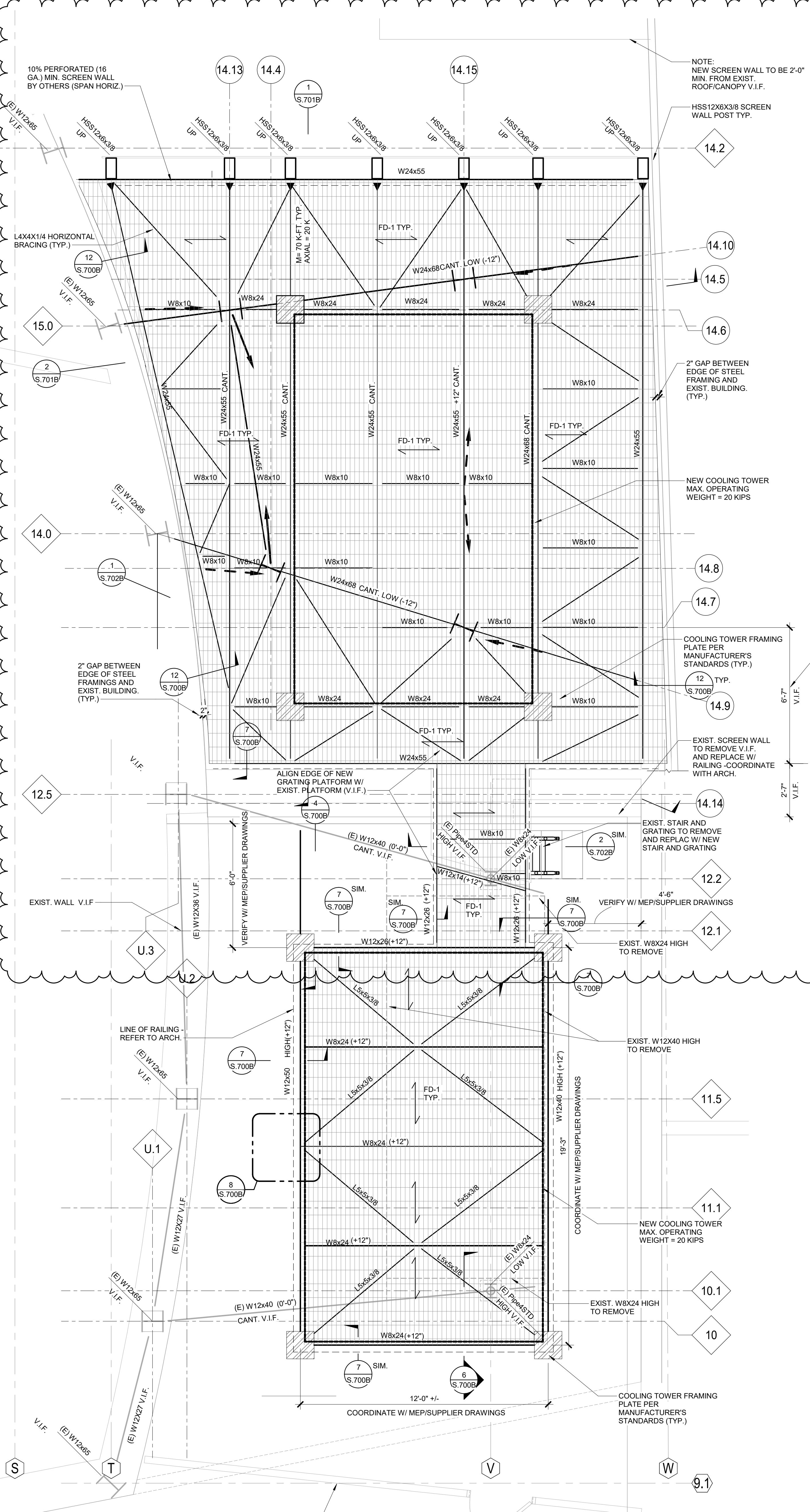


ROOF FRAMING NOTES:

- COORDINATE SIZES AND LOCATION OF ALL EXISTING ROOF OPENINGS WITH EXISTING DRAWINGS. COORDINATE LOCATION/SIZE OF EXIST. OPENINGS TO BE ENLARGED WITH EOR/ARCH. FOR REQUIRED REINFORCEMENT AROUND THE OPENINGS. REPORT ANY DISCREPANCIES WITH RESPECT TO SIZE AND WEIGHTS SHOWN ON THESE DRAWINGS TO THE ARCHITECT AND ENGINEER.
- CONTRACTOR SHALL FIELD VERIFY EXISTING CONDITIONS (SIZES, SPACING LOCATIONS, DIMENSIONS, ETC.) OF EXISTING FRAMING IMPACTED BY NEW CONSTRUCTION. REPORT ANY DISCREPANCIES TO ARCHITECT AND ENGINEER.
- ALL EXTERIOR STEEL AND GRATING SHALL BE HOT-DIPPED GALVANIZED. - REFER TO GENERAL NOTES.
- FD-1: W-19 (1 1/2" x 3/16") STEEL BAR GRATING, HOT-DIP GALVANIZED. WELD GRATING TO STRUCTURAL SUPPORT @ 12" O.C. (3/16" FILLET WELD, 3" @ 12" O.C.)
- CLEAN AND PAINT ALL EXTERIOR STEEL WITH CORROSION INHIBITING EPOXY PAINT - REFER TO GENERAL NOTES.
- ALL CONNECTIONS OF COOLING TOWER TO STRUCTURAL FRAMING TO BE PROVIDED BY PROFESSIONAL ENGINEER LICENSED IN THE STATE OF MICHIGAN HIRED BY CONTRACTOR. SUBMIT SIGNED AND SEALED CALC. TO EOR TO REVIEW
- REMOVE AND REPLACE ALL EXISTING BOLTS WITH GALVANIZED A325 BOLTS OF MATCHING SIZE. REPLACE BOLTS ONE AT A TIME. SHORE AS REQUIRED
- VERIFY THE LOCATION/DIMENSION OF NEW STEEL FRAMING WITH MEP/SUPPLIER DRAWINGS. VERIFY ALL COOLING TOWER DIMENSIONS, WEIGHT, AND REQUIREMENTS FOR STRUCTURAL STEEL TO SUPPORT COOLING TOWER W/ MEP/SUPPLIER DRAWINGS. REPORT ANY DISCREPANCIES TO ARCHITECT AND ENGINEER.
- TOP OF NEW STEEL OF TWO COOLING TOWERS TO MATCH. CONTRACTOR TO VERIFY IN FIELD STEEL ELEVATION BEFORE FABRICATION.
- REACTIONS AND MEMBER FORCES ARE FACTORED (LRFD).
- REFERENCE DRAWINGS:**
S.000 GENERAL STRUCTURAL NOTES
S.001 GENERAL STRUCTURAL NOTES
S.002 SPECIAL INSPECTION SCHEDULES
- BEAM DESIGNATIONS:**
M = xx FT-K
V = xx K
C = X"
(IF SHOWN) INDICATES CAMBER REQUIRED AT BEAM MID-SPAN
(IF SHOWN) INDICATES NUMBER OF 3/4"x96" HEADED STUDS
(X) INDICATES EQUAL SPACING
(X,X) INDICATES NUMBER PER BEAM SEGMENT
(IF SHOWN) INDICATES MOMENT CONNECTIONS
(IF SHOWN) INDICATES BRACE

1 COOLING TOWER FRAMING

3/8" = 1'-0"



VERIFY DIMENSIONS W/ ARCH DRAWINGS (TYP.)

VERIFY W/ MEP/SUPPLIER DRAWINGS

EXIST. W8x24 HIGH TO REMOVE

EXIST. W12x40 HIGH TO REMOVE

COORDINATE W/ MEP/SUPPLIER DRAWINGS

EXIST. W8x24 HIGH TO REMOVE

NEW COOLING TOWER MAX. OPERATING WEIGHT = 20 KIPS

COOLING TOWER FRAMING PLATE PER MANUFACTURER'S STANDARDS (TYP.)

COORDINATE W/ MEP/SUPPLIER DRAWINGS

EXIST. W8x24 HIGH TO REMOVE

EXIST. SCREEN WALL TO REMAIN V.I.F.

