

YOUR  
WATER BILL  
IS CHANGING

FIND OUT HOW  
AND WHY INSIDE

PARCEL VIEWER

HOW WE IDENTIFY HARD SURFACES  
ON YOUR PROPERTY

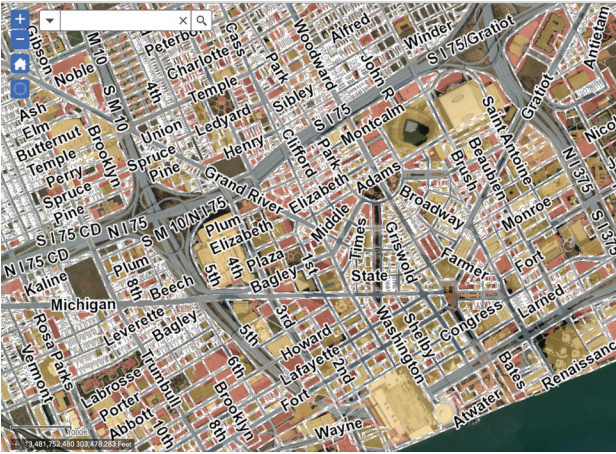
Go online to see the satellite imagery we used to identify hard surfaces on your property.

STEP 1

Go to [www.detroitmi.gov/DWSDparcelviewer](http://www.detroitmi.gov/DWSDparcelviewer)

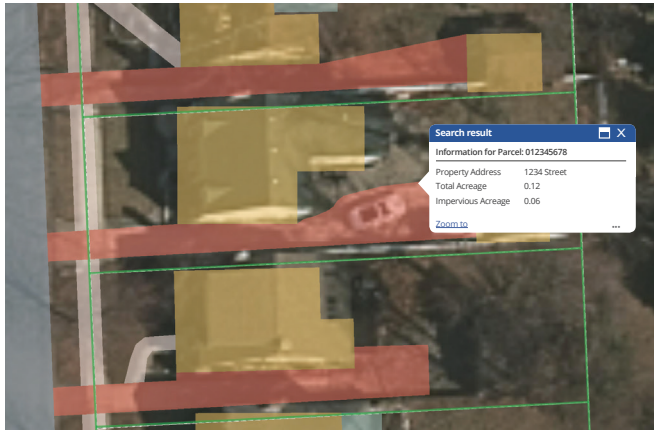
STEP 2




Enter your address.



STEP 3

View your parcel information.  
*Display may appear differently depending on your browser. Use + and – icons to zoom in and out of the map to click on your parcel.*



-  Your property boundary
-  Structure (house or garage)
-  Pavement (driveway or patio)

DWSD has factored in an automatic adjustment to allow for a margin of error within your parcel boundary. Your fee is calculated by rounding down the acres of hard surface to the nearest hundredth of an acre. For example: an estimated measurement of 0.047 acres of hard surface is rounded down to 0.04 acres on your bill.

PROJECTED RESIDENTIAL DRAINAGE CHARGES\*

HOW THE DRAINAGE CHARGE IS CALCULATED

Multiply amount of hard (impervious) surface by the rate of \$598. Subtract green credits.

MAKE SURE WE ARE ACCURATE

If your hard surface is incorrect, fill out the Drainage Charge Adjustment Application at [detroitmi.gov/drainage](http://detroitmi.gov/drainage) or call a Customer Care representative at **(313) 267-8000 and press option #6**.

\* Projected rates are subject to Board of Water Commissioners approval for fiscal year 2019. Charge includes the green credit of about 25%, and only applies to households subject to the fee. Residential properties with less than 0.02 impervious acres will not be billed and properties that discharge to surface waters are not subject to the drainage fee.

HARD SURFACE (IMPERVIOUS ACRE)	PROJECTED DRAINAGE CHARGE
Less than 0.02	\$0.00
0.02	\$8.53
0.03	\$12.79
0.04	\$17.05
0.05	\$21.32
0.06	\$25.58
0.07	\$29.85
0.08	\$34.11
0.09	\$38.37
0.1	\$42.64
0.2	\$85.27
0.3	\$127.91
0.4	\$170.55
0.5	\$213.19

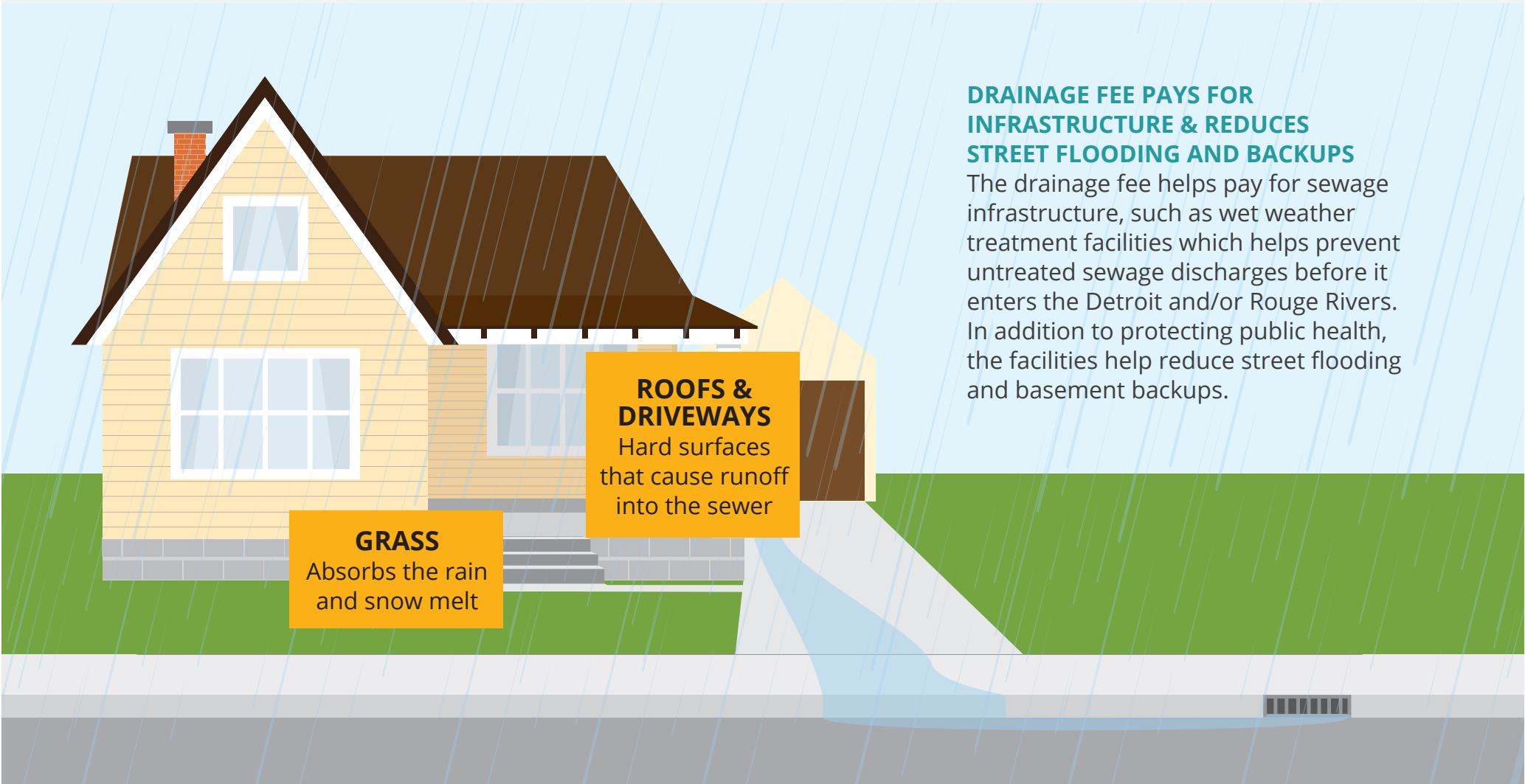
DEAR DWSD CUSTOMER:

This is to inform you of a change you will see on your water bill.

The city is changing how it charges you for drainage. Until now, most households have been charged a flat drainage fee of \$20.63 per month. This has been the case whether the property was large or small and whether the lot was covered mostly with grass or with hard (impervious) surfaces like roofs and concrete driveways.

Your drainage fee will now be based on the actual amount of hard surfaces on your property that send rainfall and snow melt into the sewer system. **The change will take effect July 1, and will be reflected on your bill starting in August.**

The majority of households are on smaller lots and will see a reduction in their drainage fee. Homes with larger than average roofs and longer driveways likely will see an increase on their bill based on the specifics of their own property.



DRAINAGE FEE PAYS FOR INFRASTRUCTURE & REDUCES STREET FLOODING AND BACKUPS

The drainage fee helps pay for sewage infrastructure, such as wet weather treatment facilities which helps prevent untreated sewage discharges before it enters the Detroit and/or Rouge Rivers. In addition to protecting public health, the facilities help reduce street flooding and basement backups.

HOW IS MY BILL CHANGING?

GREEN CREDIT

Residential properties will receive an automatic 25% Green Credit on their bill based on the assumption they have redirected their downspouts to run onto their lawn instead of directly into the sewer.

Account Information

Account Name: JOHN DOE  
Account: 123.4567.301  
Service Address: 1234 MAIN STREET  
Customer Class: CITY RESIDENT  
Service Dates: 07/12/18 - 8/12/18  
Bill Date: 08/01/18

Meter Information

Meter Number: 123456789  
Meter Size: 3/4 inch  
Meter Svc Chrg: \$5.00  
Begin Read Date: 07/12/18  
Beginning Read: 0.00  
End Read Date: 08/12/18  
Ending Read: 0.00  
Usage: 0.00  
Days Billed: 31

Drainage Information

Conversion - 1 acre equals 43,560 sq ft  
Parcel Number: 123456789012  
Total Acres: 0.15  
Impervious Acres (IA): 0.05

Message Board

Need cash this tax season? Claim the Earned Income Tax Credit (EITC) and the Child Tax Credit (CTC) on your 2018 tax return. Depending on your income, number of children, and other factors, you could receive up to \$6,000. You must file a tax return to claim the credits. For details, visit: [claimyourrefund.com](http://claimyourrefund.com) or call 2-1-800-368-3683.

August Bill Details

Previous Balance		\$163.16
Payments Received - Thank you!		-\$163.16
Balance Forward		\$0.00
Current Water Charges		
Water Usage	5 CCF @ \$2.376	\$11.88
Water Service Charge	\$7.02 @ 1 month	\$7.02
Water Subtotal		\$18.90
Current Sewer Charges		
Sewerage Disposal	5 CCF @ \$5.273	\$26.37
Sewerage Service Charge	\$6.04 @ 1 month	\$6.04
Drainage Charge	0.05 IA @ \$598.00	\$29.90
Green Credit	(\$8.58) @ 1 month	-\$8.58
Sewer Subtotal		\$53.73
Total Water & Sewer Charges		
		\$72.63
Total Amount Due by 9/12/18		\$72.63