



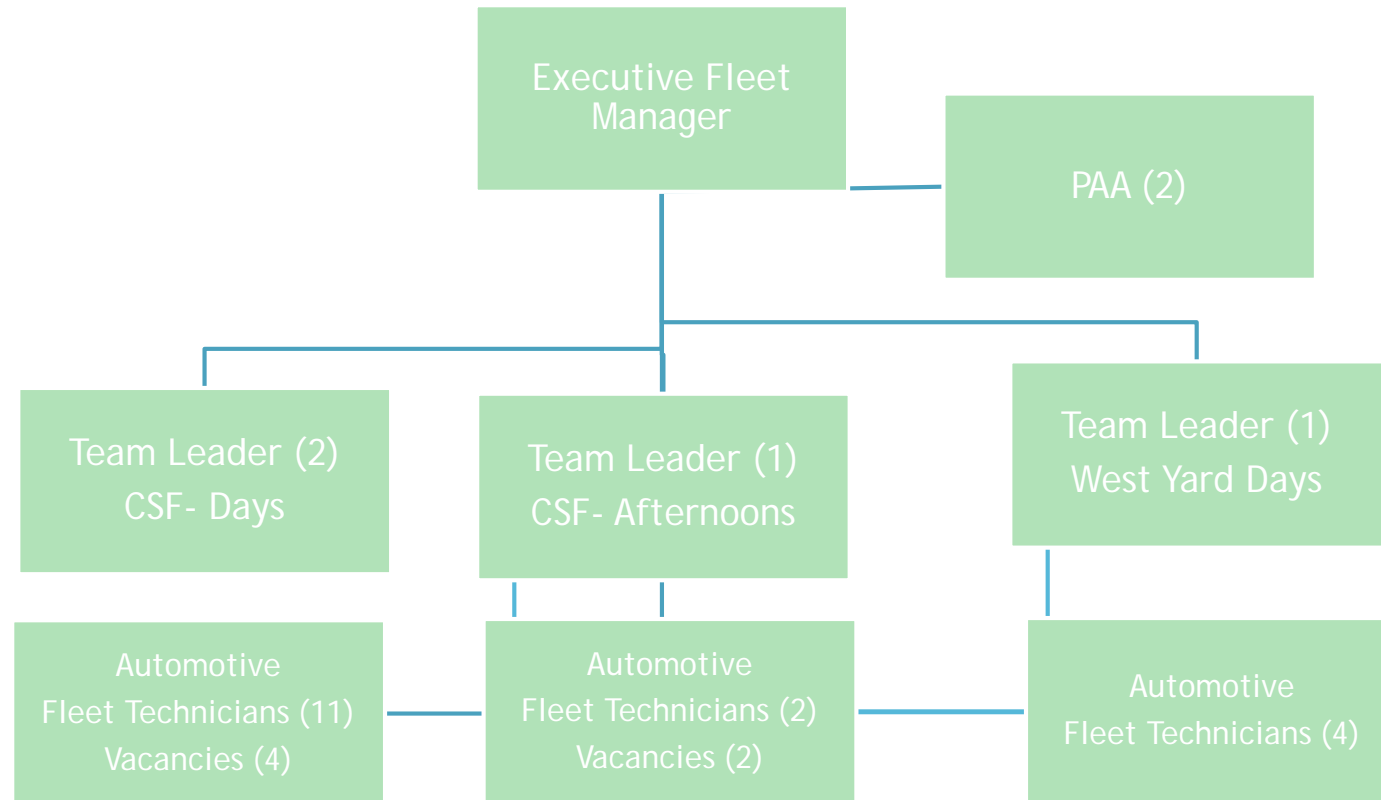
Water & Sewerage
Department

FLEET Operations

Craig Rice- Executive Fleet Manager



Fleet - 30 FTEs



Fleet and Shop Profile

VEHICLES

Vehicle Types	Total Count
DWSD	378
Emergency Vehicles	6
Heavy Duty Trucks	58
Light Trucks and Vans	264
Meduim Duty Trucks	41
Passenger vehicles	7
Specialized Trucks	2
GLWA	306
Heavy Duty Trucks	7
Light Trucks and Vans	267
Meduim Duty Trucks	13
Passenger Vehicle	16
Specialized Trucks	3
Grand Total	684

LOCATIONS

<u>CSF</u>	<u>West Yard</u>
Central Services Facility	West Yard
6425 Huber Street	13401 West Outer Drive
Detroit, Michigan 48211	Detroit, Michigan 48217

EQUIPMENT

<u>Equipment</u>	<u>Total #</u>
Grand Total	715

Industry Standards – Best Practices

Having the ability to do the following:

- ▶ Accurately develop and implement fleet charge-back rates
- ▶ Schedule and Monitor the Effectiveness of Preventative Maintenance (PM) Programs
- ▶ Measure fleet availability and downtime (reasons for excessive downtime)
- ▶ Track and measure Technician productivity
- ▶ Track repair hours by repair type and cost by equipment in class
- ▶ Accurately Track vehicle and component cost per mile (CPM) for replacement planning
- ▶ Monitor set established repair rates that are transparent to the fleet using departments
- ▶ Establish and track annual parts inventory turn
- ▶ Set goals for, and track parts demand fill rate for the shop floor
- ▶ Communicate transparent vehicle repair activity to fleet customer to ensure satisfaction

Current Systems Overview

DWSD has minimal information and record keeping that supports industry best practices.

DWSD Fleet Management Department is in the process of implementing a new fleet management software system:

M5 AssetWorks FuelFocus and FleetFocus.

The M5 Assetworks software fulfills all industry best practices.

M5 will help the Fleet Department to manage fleet cost, vehicle and employee performance. M5 Assetworks will give fleet the opportunity to create dashboards to track vehicle availability in priority groups, schedule maintenance of units in need of service, provide “read-only” access for statuses of down units as well as the ability for customers to request and reserve loaner vehicles.

Fleet Time Study

- ▶ Time Study is an important component as it measures the time it takes an average worker to complete a task.
- ▶ When time studies are used productivity typically improves by 20%
- ▶ Time standards are beneficial by evaluating actual performance vs. productivity. To operate effectively, areas such as planning, training and scheduling all depend on time and operational procedures. This helps to conserve resources and minimize repair cost.
- ▶ The ongoing ability to monitor the accuracy and effectiveness of the Fleet Time Study will be met through the implementation of Assetworks M5.

Opportunities

GPS

Time Study

New Software
(M5 Assetworks)

Hybrid Vehicles

Compressed Natural Gas (CNG)

Total Cost of Ownership